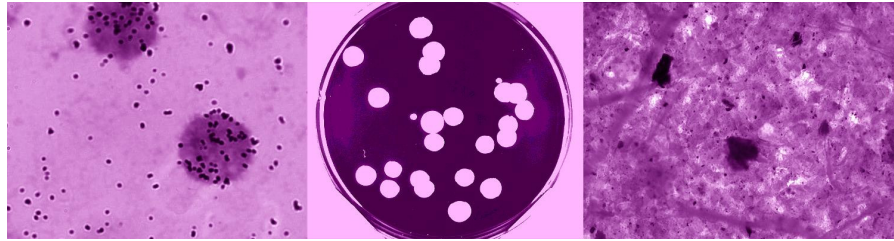


IMAGE ANALYSIS SYSTEM



| | |
|-----------------------------------|---|
| Video image capture | Monochrome camera for macro & microscopic imaging. High resolution option available. |
| Sensitivity and resolution | Standard resolution 768 x 576 pixels. High resolution 1280 x 1030 pixels. |
| Analysis speed | Between 0.1 and 2.0 seconds for each field of view. |
| Video invert | For objects darker or lighter than substrate. |
| Detection | Standard and Matrix detection algorithms. |
| Measurement frames | Circular & rectangular variable in size and position User drawn irregular include and exclude frames. |
| Field measurements | Field Count, Field Area, Frame Area, No. objects excluded, Field PPM, Field Perimeter, Mean Grey Level, Total Object Area, Total Object Perimeter, Total Object EBA, Mean Object Grey Level, Total Object PPM. |
| Feature measurements | Position, Area, Filled Area, Perimeter, Longest Dimension, Fibre Length, Fibre Width, Axial Ratio, X Feret, Y Feret, 45 Feret, 135 Feret, Equivalent Diameter, Circularity, Mean Grey Level, Equivalent Black Area (EBA). |
| Image editing | Cut, join, include, exclude all, dilate, erode and fill |
| Filters | Feature measurement parameters can be used as include/exclude filters singularly or in combination. |
| Image Display | Live or frozen 256 grey scale image of sample on screen with optional colour coding of detected objects. Point & shoot facility to measure an individual object. Count flags on separated objects. High resolution zoom window. |
| Image Processing | Binary remove, erode, dilate, separate and hole fill. Variable grey level sharpening. Matrix shade compensation. |
| Calibration | Multiple calibration factors can be saved for different microscope objectives and lenses |

Sorcerer - Technical Specification

PERCEPTIVE
INSTRUMENTS





- Macro builder** Simple to use editor to create measurement macros for specific tasks. No programming skills are required.
- Size classification tables** Defined by the supervisor, up to 50 classes in any progression and on any parameter. Unlimited number of tables can be saved for routine use.
- Data handling** Configurable results table including derived parameters displayed on screen. Data transfer directly to Microsoft Excel. Template for Field, Feature, Histogram, PSA Summary, User Defined, CSV and output tables.
- Measurements can be made either from Sorcerer or Excel.
- Direct transfer of data to Microsoft Access and Oracle database tables.
- Configurations** Multiple configurations can be saved for different applications e.g. PSA, Colony Counting, UDS, ELISPOT and antibiotic assays.
- Image capture** Images can be saved and retrieved as Windows Bitmap files.
- Headings** Results tables can be customised with up to ten headings. Configurable to default to blank or previous entry.
- Electronic signatures and records** Total compliance with FDA 21 CFR Part 11 Rule Interface to link with a supplied or any client database of authorised users.
- Access levels** Supervisor, Advanced user and User access levels
User administration programs.
Additional locks on individual menus and menu items.
- GLP compliance** Encoded audit data file reports all original and edited data with reason, date, time and by whom.
Encoded audit trail file reports all system configuration settings and changes made during analysis.
Variable, timed user log-outs and password expiry.

Recommended minimum configuration for Sorcerer:

Microsoft Windows XP, Vista or 7.
Microsoft Office 2000 or later.
Oracle 9i, 10g or 11g if you intend to connect to a database.
One free PCI slot for image interface board.



At Perceptive Instruments Ltd, we have ISO 9001 approval for our Quality Management system from a UKAS and ANAB accredited certification body.

PERCEPTIVE INSTRUMENTS

Blois Meadow Business Centre • Steeple Bumpstead • Haverhill • Suffolk • United Kingdom • CB9 7BN
Telephone: +44 1440 730773 • Fax: +44 1440 730630
sales@perceptive.co.uk • www.perceptive.co.uk